

## PRODUCT DATA SHEET

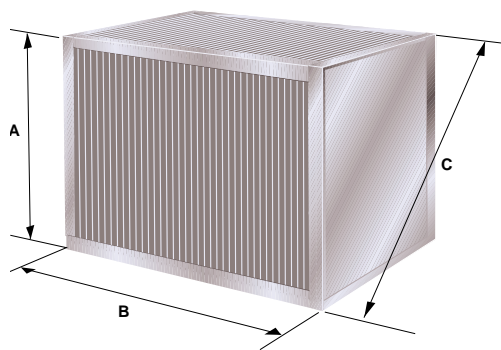
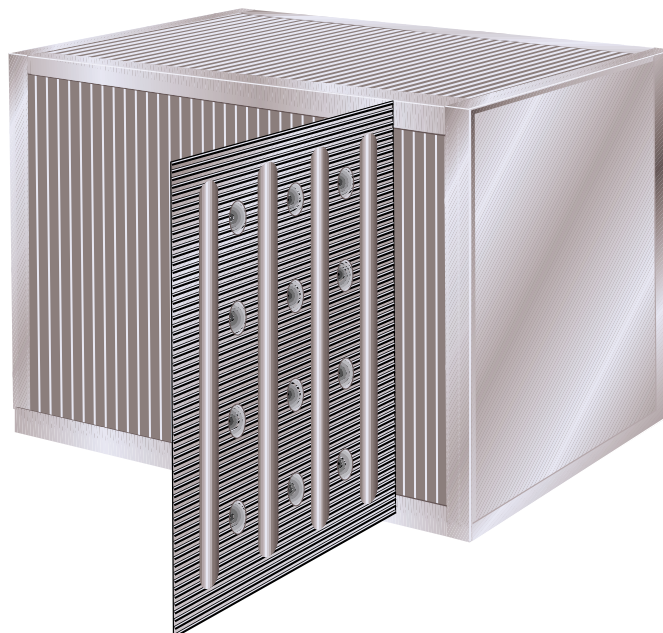
### MODEL P (Pressure resistant)

Aluminium and aluminium with epoxy coating.

The Heatex Model P exchanger is designed with the same plate configuration as the success exchanger Heatex Model H, and does allow the same high heat transfer coefficient.

The special characteristics of the Model P is the extra strengthened construction allowing extreme pressure differences up to 6800 Pa, in which situation the pressure drop is limited to about 50% increase.

A single pass exchanger provides an efficiency of 65 - 70%.



### MODEL P RANGE

Model	Measure mm				Plate distance (mm)
	A	B	C45	C90	
600	600	250-1200	-	849	3.0/4.5/6.0/7.5/9.0/10.5/12.0
750	750	300-1200	-	1061	4.5/6.0/7.5/9.0/10.5/12.0
1000	1000	350-1200	-	1414	5.0/6.0/7.5/9.0/10.5/12.0
1200	1200	350-1200	-	1697	4.5/6.0/7.5/9.0/10.5/12.0
1500	1500	350-1200	-	2122	4.5/6.0/7.5/9.0/10.5/12.0
2000	2000	350-1200	-	2828	5.0/6.0/7.5/9.0/10.5/12.0
2250	2250	350-1200	-	3182	4.5/6.0/7.5/9.0/10.5/12.0
2400	2400	350-1200	-	3394	4.5/6.0/7.5/9.0/10.5/12.0

Plate material: Aluminium/Epoxy coated aluminium

Frame material: Corner profiles in aluminium and end-plates in aluzinc.

Sealing: Siliconefree (max 90°C, 190°F)  
Silicone scentless (max 150°C, 300°F)  
Silicone w. acetum (max 200°C, 390°F)

### FRAME DESIGNS

Heatex P-models are available in one standard frame design 2 E. See also Heatex Frame Design data sheet.

All frameworks also available painted.

Owing to continued product development Heatex AB reserves the right to introduce alterations both in design and prices without prior notice.

### Heatex AB

Tommarpsvägen 46, SE-231 65 Trelleborg, Sweden  
Phone: +46 410 36 35 00, Fax: +46 410 36 35 29  
Internet: [www.heatex.com](http://www.heatex.com)