

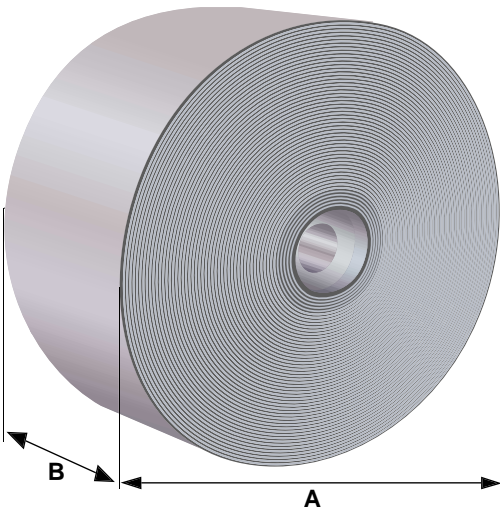
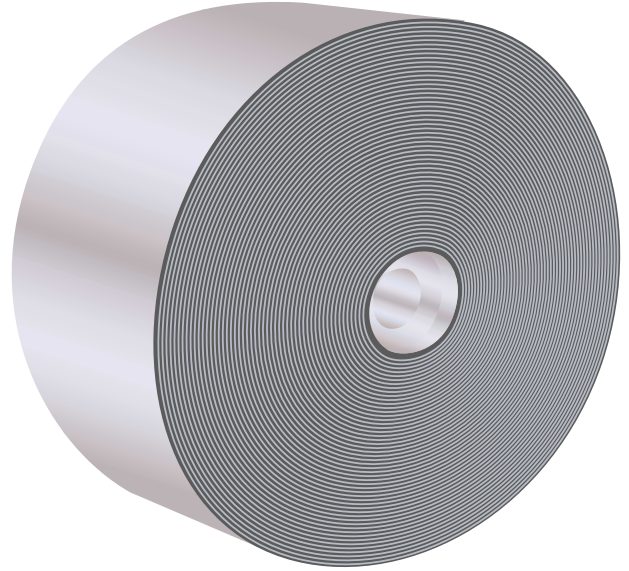
MODEL W (Thermal wheel)

The Heatex Model W is a thermal wheel for ordinary heat recovery applications.

Significant for the Heatex Model W, is the well achieved roundness/balance of the wheels. Also to be noted, are the smooth and levelled air in- and outlet sides. In order to prevent unwrapping, the Model W is as standard provided with spokes.

The performance of the Heatex Model W is being calculated with the same well-reputed precision as all other Heatex exchangers.

Heatex Model W is available in aluminium or in aluminium with epoxy coating.



MODEL W RANGE

(other measures can be offered on request)

Measure mm		Channel height nominal (mm)
A	B	
300	200	1.5 / 2.0 / 2.5
450	200	1.5 / 2.0 / 2.5
600	200	1.5 / 2.0 / 2.5
800	200	1.5 / 2.0 / 2.5
950	200	1.5 / 2.0 / 2.5
1100	200	1.5 / 2.0 / 2.5
1200	200	1.5 / 2.0 / 2.5
1350	200	1.5 / 2.0 / 2.5
1500	200	1.5 / 2.0 / 2.5

Matrix material: Aluminium or Epoxy coated aluminium

STANDARD HUB

The Model W is available with various bearings/shafts.