

PRODUCT DATA SHEET

MODEL H (High effectiveness)

Aluminium and aluminium with epoxy coating.

The Heatex Model H exchanger is characterized by the fact that the plates, made of raw or epoxy coated aluminium, are corrugated. Heat transfer is improved by the surface creating turbulence. The increased turbulence occurs without any filth erecting stagnation points and speed changes. This way the whole exchanger is utilized to the maximum.

A single pass exchanger provides an efficiency of 65 – 70%.

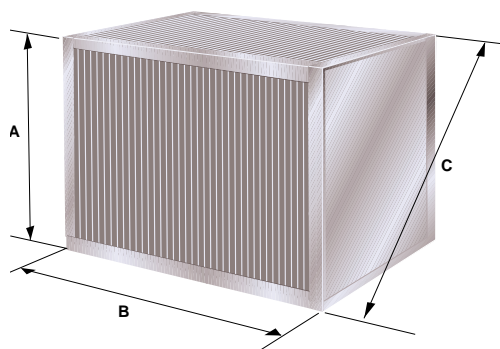
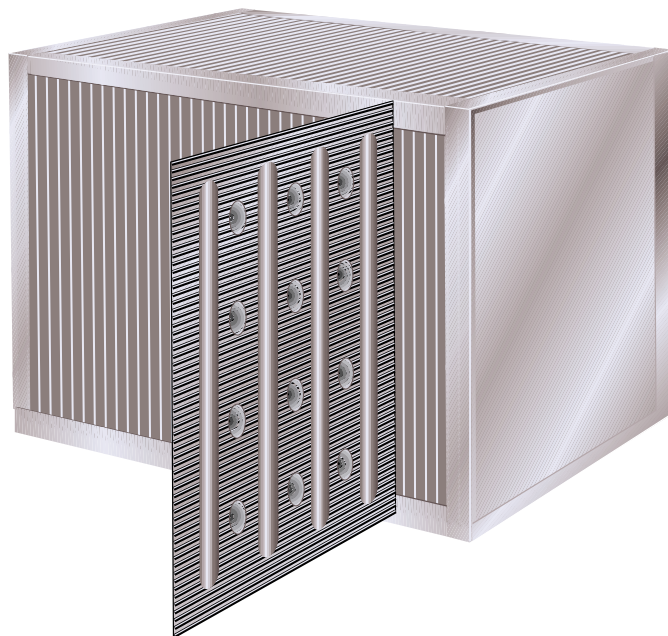


Plate material: Aluminium/Epoxy coated aluminium
 Frame material: Corner profiles in aluminium and endplates in aluminium (A&C) or aluzinc (E).
 Sealing: Siliconefree (max 90°C, 190°F)
 Silicone scentless (max 150°C, 300°F)
 Silicone w. acetum (max 200°C, 390°F)

MODEL H RANGE

Model	Measure mm				Plate distance (mm)	Frame designs
	A	B	C45	C90		
200	200	100-600	265	283	2.1 / 2.4 / 2.7	*
300	300	100-600	406	424	1.2/1.6/1.8/2.2/3.0/4.0/5.0	*
415	415	200-700	548	587	3.3 / 4.2 / 5.0 / 6.5	*
425	425	200-1000	-	601	3.3 / 4.2 / 5.0 / 6.5	2C
490	490	250-1000	-	693	3.3 / 4.2 / 5.0	2E
600	600	250-1200	-	849	3.0/4.5/6.0/7.5/9.0/10.5/12.0	2E
750	750	300-1200	-	1061	4.5/6.0/7.5/9.0/10.5/12.0	2E
850	850	300-1000	-	1202	3.3/5.0/6.5/7.5	2C
1000	1000	350-1200	-	1414	5.0/6.0/7.5/9.0/10.5/12.0	2E
1200	1200	350-1200	-	1697	4.5/6.0/7.5/9.0/10.5/12.0	2E
1500	1500	350-1200	-	2122	4.5/6.0/7.5/9.0/10.5/12.0	2E
2000	2000	350-1200	-	2828	5.0/6.0/7.5/9.0/10.5/12.0	2E
2250	2250	350-1200	-	3182	4.5/6.0/7.5/9.0/10.5/12.0	2E
2400	2400	350-1200	-	3394	4.5/6.0/7.5/9.0/10.5/12.0	2E

FRAME DESIGNS

* Heatex models 200-415 are also available in various designs.
 See Heatex Frame Design data sheet.
 All frameworks also available painted.

Owing to continued product development Heatex AB reserves the right to introduce alterations both in design and prices without prior notice.

Heatex AB

Tommarpsvägen 46, SE-231 65 Trelleborg, Sweden
 Phone: +46 410 36 35 00, Fax: +46 410 36 35 29
 Internet: www.heatex.com