



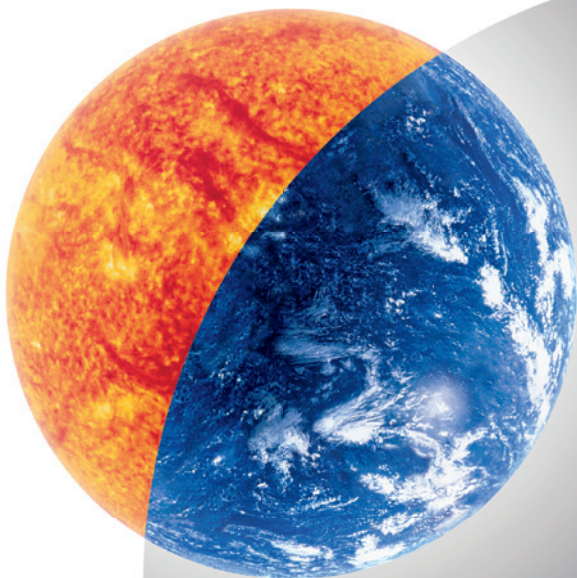
The world's leading trade fair  
The Bathroom Experience,  
Building, Energy, Air-conditioning Technology  
Renewable Energies

Frankfurt am Main, 12 – 16. 3. 2013

Water for People

Efficient Heating Systems and  
Renewable Energies

Aircontec – Air-conditioning,  
Cooling, Ventilation



Please scan  
QR code!



messe frankfurt

# Dedicated to water and energy.

Welcome to ISH 2013.

ISH is the world's largest showcase for innovative bathroom design, sanitary installations, energy-efficient heating, building and air-conditioning technology and renewable energies.

The ISH show combines the segments of water, energy, technology and design more effectively than any other trade fair. This unique integrated concept makes ISH the most important trade fair for resource conservation and sustainability – now and in the future.

This concept and more than 2,300 exhibitors ensure a breadth and depth of products and services unmatched at any other trade fair. Benefit from this opportunity to access all the latest information.





### **ISH Water**

In the ISH Water area manufacturers will be exhibiting sustainable, design-oriented bathroom solutions. From high-tech to high-end design – the largest showroom in the world presents the latest design developments as well as state-of-the-art sanitary installations with the focus on sustainability.

### **ISH Energy**

The ISH Energy area covers the entire spectrum of innovative building system technologies. Have a glimpse into the future of energy technology with efficient heating systems in combination with renewable energies and building automation combined with energy management.

### **Aircontec**

Air-conditioning, cooling and ventilation technologies can be found at ISH in the Aircontec area. With sustainable and future-oriented solutions for building air-conditioning, here you can experience the latest developments at first hand.

### **World of Installation Technology**

ISH is rounded out by the World of Installation Technology, which supplements and links the ISH Water and ISH Energy areas. Here you'll find suitable installation systems and tools for ideal project realisation.

### **More than an add-on – the ISH special events**

There are numerous special events at ISH showcasing the latest developments in all sectors, e.g. Design Plus powered by ISH, the "Pop up my Bathroom" trend forum as well as various other forums focusing on the trends and themes of the industry.

# Product areas at ISH.



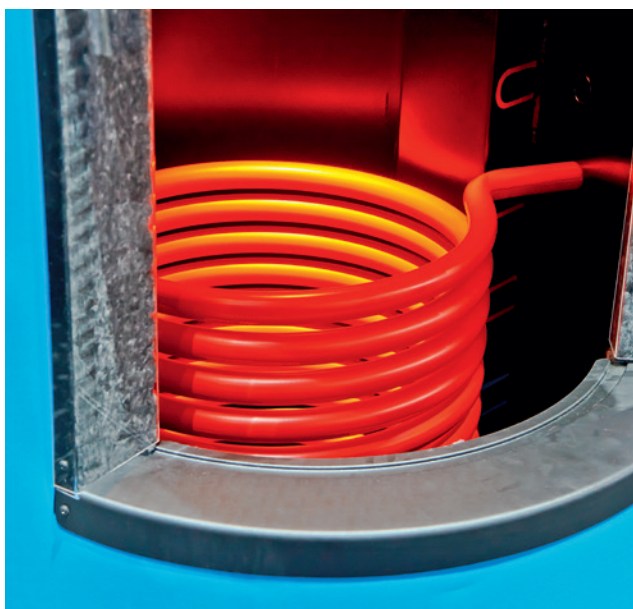
## ISH Water

### **The Bathroom Experience**

Fittings, bathtubs, shower enclosures, bathroom furniture, accessories, ceramics, swimming pools and saunas.

### **World of Installation Technology**

Installation technology, installation systems, water treatment, piping, tools, IT systems and software.



## ISH Energy

### **Building and Energy Technology/Renewable Energies**

Boilers, burners, heaters, flues, heat pumps, solar energy systems, biomass, use of rain water, traditional tiled stoves, fireplaces, wood and pellet burning stoves, fittings and components for heating equipment, measurement and control technology, home and building automation and energy management.

### **Aircontec – Air-conditioning, Cooling and Ventilation Technology**

Air-conditioning units and systems, structural components for air-conditioning control systems and building temperature control, systems and components for home ventilation, central dust extraction systems, cooling equipment, open ventilation systems, climate façades and heat pumps.

# The future in detail.

Information and services.

## Opening times and prices

**Opening times:** 12 – 15. 3. 2013, 09:00 – 18:00  
16. 3. 2013, 09:00 – 17:00

### Admission prices:

One-day ticket: Advance sales € 17.00, Box office € 35.00  
Season ticket: Advance sales € 46.00, Box office € 75.00  
One-day ticket (concessions): € 10.00 at the box office

### Online tickets:

Benefit from reduced prices and easy ordering by buying your tickets online in advance (approx. 6 months before the event)  
at: [www.ish.messefrankfurt.com](http://www.ish.messefrankfurt.com)

If you always have your mobile phone with you, why not have your online ticket sent directly to your phone?

## Getting here

**By car:** Follow the signs for "Messe" on all motorway exits. This will bring you to the Rebstock car park. From there you can take a free shuttle bus to the exhibition centre entrance.

**By plane:** From Frankfurt/Main airport, take S-Bahn (suburban railway) line S8 or S9 to the Hauptbahnhof (central train station). Then follow the directions in the "By train" section below. There is a shuttle bus that will take you directly to the exhibition centre at a modest charge.

**By train:** The exhibition centre is only a few minutes from Frankfurt central station (Hauptbahnhof). Take tram line 16 or 17, U-Bahn line U4 or a taxi to the Messe City entrance, or S-Bahn line S3, S4, S5 or S6 to the „Torhaus“ entrance.

## Accommodation

**Book** your hotel room or private accommodation through:  
Tourismus + Congress GmbH  
Tel. +49 69 21 23 08 08, Fax +49 69 21 24 05 12  
[info@infofrankfurt.de](mailto:info@infofrankfurt.de), [www.frankfurt-tourismus.de](http://www.frankfurt-tourismus.de)

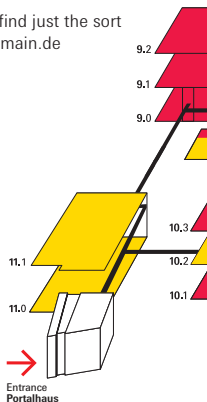
The Frankfurt Rhein-Main Hotel Guide will help you find just the sort of accommodation you want. [www.hotelguide-rheinmain.de](http://www.hotelguide-rheinmain.de)

## Energy

- Building and Energy Technology/Renewable Energies
- Aircontec/Air-conditioning, Cooling and Ventilation Technology

## Water

- The Bathroom Experience
- World of Installation Technology



## Finding exhibitors

You can find details of all exhibitors **online** at [www.ish.messefrankfurt.com](http://www.ish.messefrankfurt.com)

The **Catalogue** is available approx. two weeks before the start of the show at a price of € 33,00 (plus postage and packing) and can be ordered from [www.ish.messefrankfurt.com](http://www.ish.messefrankfurt.com).

The **Compass stands** at Messe Frankfurt also offer information about how to find exhibitors and products.

## Other services

**NEW:** Free **WLAN service** available throughout the whole exhibition centre.

**Service Center:** On Levels 1 to 3 of the Torhaus Service Center there is a Business Center with Internet workstations, interpreters, multimedia resources, shopping facilities and lots of other services.

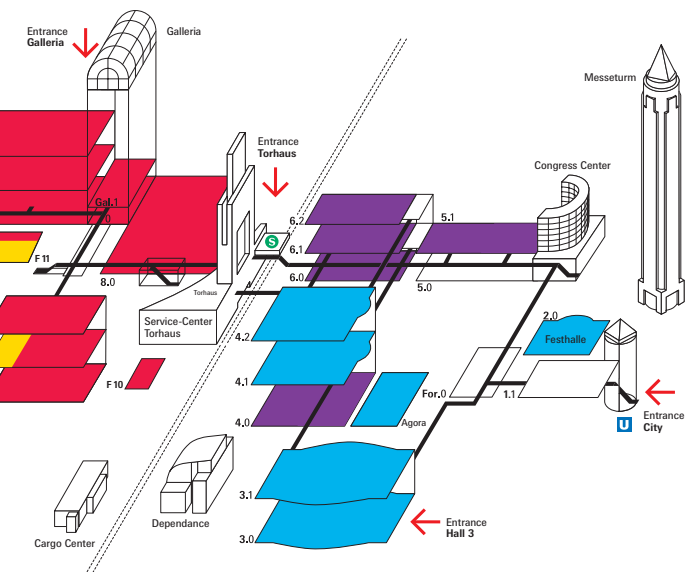
**Come and visit** our social network pages on:



## Important information

**Photography** is prohibited throughout the exhibition centre – this includes cameras and mobile phones. Cameras may be deposited at the entrance or at the cloakrooms.

**Free Newsletter at:** [www.ish.messefrankfurt.com](http://www.ish.messefrankfurt.com)



**Messe Frankfurt Exhibition GmbH**

Postfach 15 02 10

60062 Frankfurt am Main, Germany

Tel. +49 69 75 75-0

Fax +49 69 75 75-60 06

[ish@messefrankfurt.com](mailto:ish@messefrankfurt.com)

[www.ish.messefrankfurt.com](http://www.ish.messefrankfurt.com)